



300 & 650 SERIES | SLIDING PATIO DOORS

# CHOOSE...



## 301

**Absolute refinement.  
A sure value.**

**Welded PVC frame**

**Welded PVC sashes**

- Recommended for renovation and new construction, residential projects: single family, condos or multi-units.
- Excellent quality and performance.
- Structural transoms and sidelites minimize air & water infiltration.
- Thermally welded frame & sashes.
- Maintenance free, all PVC construction with integrated nail fin and easy installation.
- Large glass area for maximal view
- Sizes up to 16' x 8' (W x H) and custom sizes.
- Tandem wheels for easy and smooth operation.
- Integrated white or satin grey blinds with Low E glass, available.
- Triple glazing available up to 16' x 8' (W x H).



## 370

**The wide sashes evoke the charm of a garden door.**

**Welded PVC frame**

**Mechanically assembled PVC sashes**

- The 370 combines the practicality of a sliding door with the look of a garden door.
- Excellent quality and performance.
- Structural transoms and sidelites minimize air & water infiltration.
- Thermally welded frame with direct set fixed sash.
- Maintenance free, all PVC construction with integrated nail fin and easy installation.
- Large glass area for maximum view.
- Sizes up to 16' x 8' (W x H) and custom sizes.
- Tandem wheels for easy and smooth operation.
- Integrated white or satin grey blinds with Low E glass, available.
- Triple glazing available up to 16' x 8' (W x H).



# 650

**All PVC,  
Knocked-Down**

**Mechanically assembled PVC frame  
Welded PVC panels**

- Versatile 5 3/4" frame depth
- Tandem bearings with front wheel adjustment
- No caulking required for assembly
- Florida Product Approval # FL29466

## WARRANTY

20 YEAR LIMITED WARRANTY ON SOLID PVC  
AND WHITE ALUMINUM EXTRUSION

10 YEAR LIMITED WARRANTY PAINTED DOORS

20 YEAR LIMITED WARRANTY ON LOW-E GLASS UNIT  
(RESIDENTIAL APPLICATION)

10 YEAR LIMITED WARRANTY ON INTEGRATED BLINDS

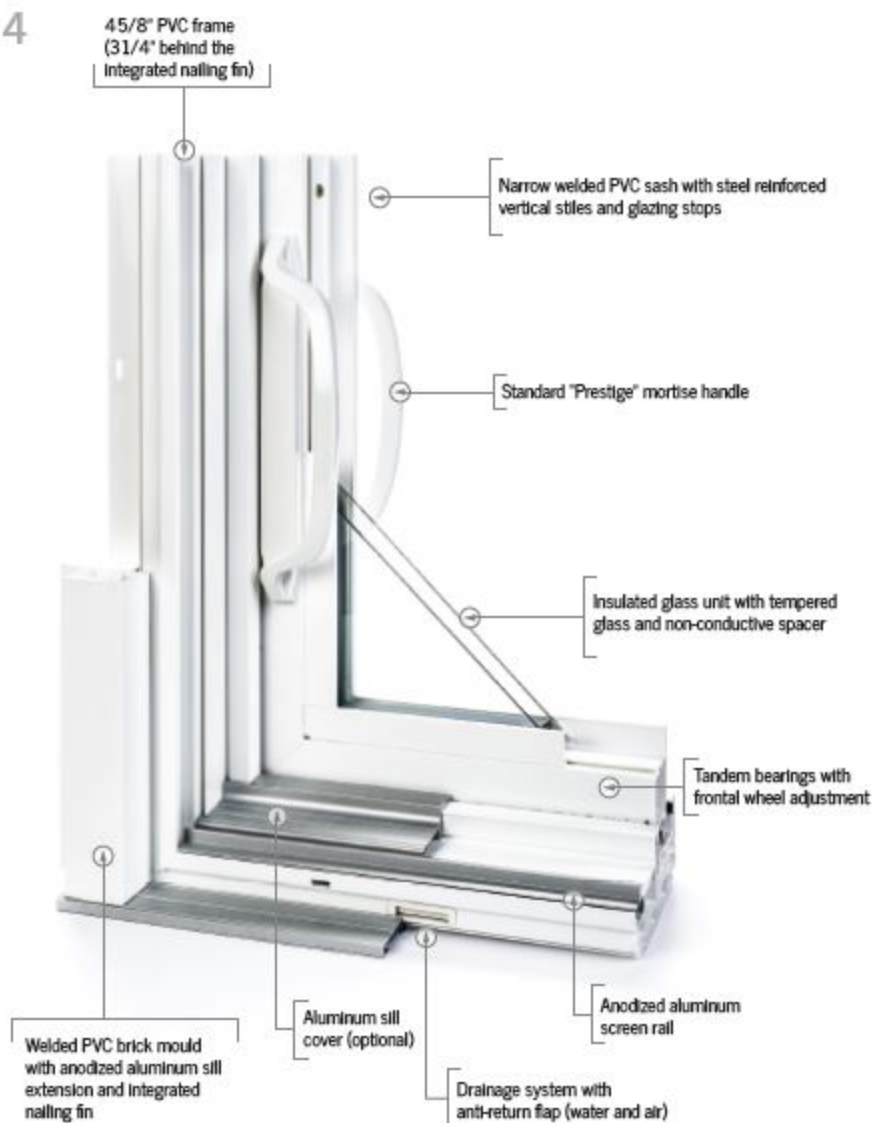
5 YEAR LIMITED WARRANTY ON HARDWARE

WARRANTY CERTIFICATE AVAILABLE UPON REQUEST

All products come standard with tempered  
glass and non-conductive spacer



4



## CHOICE OF OPENINGS AND SIZES \* Exterior view

X= OPERATING PANEL  
O= FIXED PANEL

| 5'   | 6'   | 8'   | 9' & 12'   | 9' & 12'   | 10', 12' & 16'  |
|--|--|--|--|--|---|
| <div> <div>O</div> <div>X</div> <div>X</div> <div>O</div> </div> | <div> <div>O</div> <div>X</div> <div>X</div> <div>O</div> </div> | <div> <div>O</div> <div>X</div> <div>X</div> <div>O</div> </div> | <div> <div>O</div> <div>X</div> <div>O</div> <div>O</div> <div>O</div> <div>X</div> </div> | <div> <div>X</div> <div>O</div> <div>X</div> </div>            | <div> <div>O</div> <div>X</div> <div>X</div> <div>O</div> </div>                                  |
| 59 1/2" x 79 1/2"<br>or 95 1/2"                                  | 71 1/2" x 79 1/2"<br>or 95 1/2"                                  | 95 1/2" x 79 1/2"<br>or 95 1/2"                                  | 107" x 79 1/2" or 95 1/2"<br>143" x 79 1/2" or 95 1/2"                                     | 107 1/2" x 79 1/2" or 95 1/2"<br>143 1/2" x 79 1/2" or 95 1/2" | 116 1/2" x 79 1/2" or 95 1/2"<br>140 5/8" x 79 1/2" or 95 1/2"<br>188 11/16" x 79 1/2" or 95 1/2" |

ABSOLUTE REFINEMENT. A SURE VALUE  
WELDED PVC FRAME | WELDED PVC PANELS

301

5

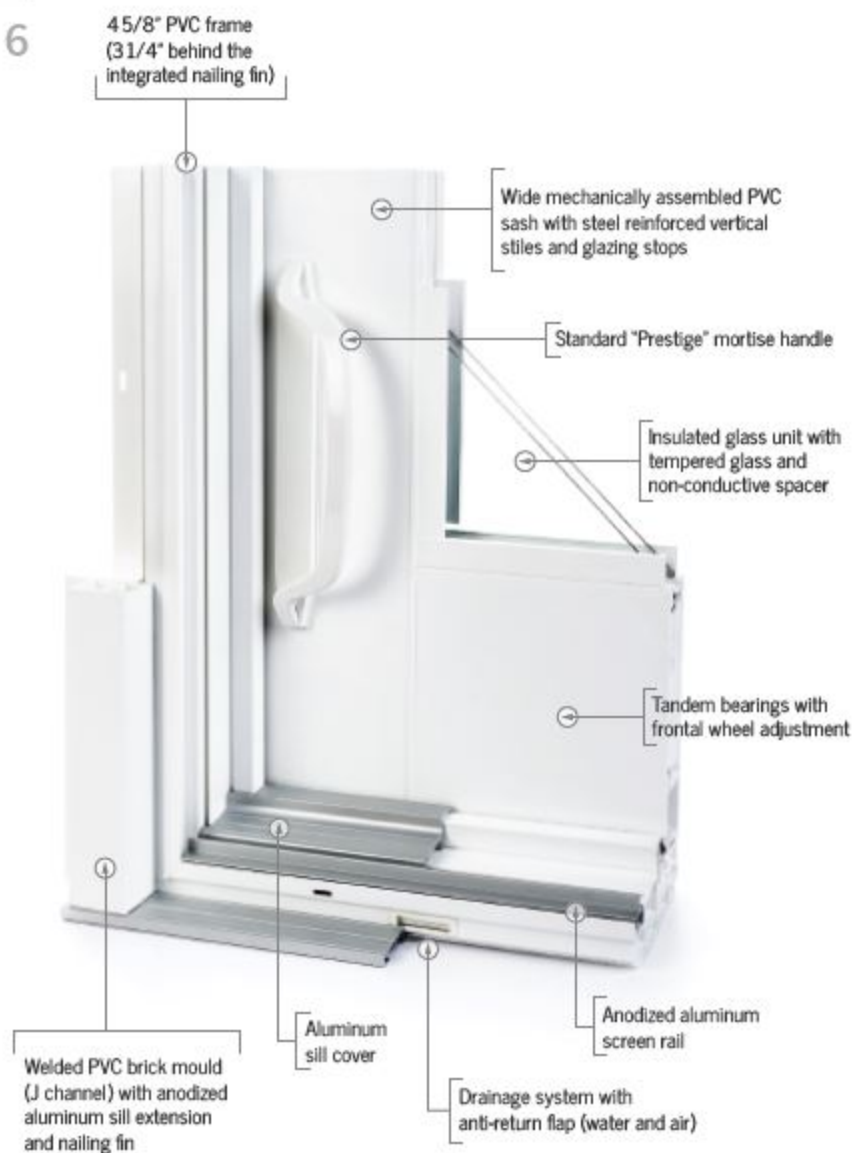
ALSO AVAILABLE :  
INTEGRATED ALUMINUM MINI-BLINDS  
OPTIONS - SATIN GREY



## PERFORMANCES

| Harmonized Standards - 96" x 80"                         | Air-tightness | Water-tightness         | Structure | Overall |
|--|---------------|-------------------------|-----------|---------|
| AAMA/WDMA/CSA101/LS2/A440-08                             | PASSED        | 360 Pa (470 Pa)         | DP-50     | PG-R50  |
| Energy efficiency  |               | FL product approval     |           |         |
| Double Glazed, Low-E 366 face #2 U 0.29 / SHGC 0.22      |               | FL27628.1 to FL27628.10 |           |         |
| Double Glazed, Low-E 272 face #2 U 0.29 / SHGC 0.34      |               |                         |           |         |
| Triple Glazed, Low-E 366 face #2 U 0.24 / SHGC 0.21      |               |                         |           |         |
| Triple Glazed, Low-E 366 face #5 U 0.23 / SHGC 0.31      |               |                         |           |         |
| Triple Glazed, Low-E 366 face #2 & #5 U 0.19 / SHGC 0.20 |               |                         |           |         |

6



## CHOICE OF OPENINGS AND SIZES \*Exterior view

X= OPERATING PANEL  
O= FIXED PANEL

| 5'   | 6'   | 8'   | 9' & 12'  | 9' & 12'   | 10', 12' & 16'  |
|--|--|--|---|--|---|
| <div> <div>O</div> <div>X</div> <div>X</div> <div>O</div> </div> | <div> <div>O</div> <div>X</div> <div>X</div> <div>O</div> </div> | <div> <div>O</div> <div>X</div> <div>X</div> <div>O</div> </div> | <div> <div>O</div> <div>X</div> <div>O</div> <div>O</div> <div>O</div> <div>O</div> <div>X</div> </div> | <div> <div>X</div> <div>O</div> <div>X</div> </div>            | <div> <div>O</div> <div>X</div> <div>X</div> <div>O</div> </div>                                  |
| 59 3/8" x 79 1/2"<br>or 95 1/2"                                  | 71 3/8" x 79 1/2"<br>or 95 1/2"                                  | 95 3/8" x 79 1/2"<br>or 95 1/2"                                  | 107 1/2" x 79 1/2" or 95 1/2"<br>143 1/2" x 79 1/2" or 95 1/2"  | 107 1/2" x 79 1/2" or 95 1/2"<br>139 5/8" x 79 1/2" or 95 1/2" | 116 3/4" x 79 1/2" or 95 1/2"<br>140 3/4" x 79 1/2" or 95 1/2"<br>188 13/16" x 79 1/2" or 95 1/2" |



# THE WIDE SASH EVOKES THE CHARM OF A GARDEN DOOR

WELDED PVC FRAME | MECHANICALLY ASSEMBLED PVC SASHES

# 370

7

ALSO AVAILABLE :  
INTEGRATED ALUMINUM MINI-BLINDS  
OPTIONS – SATIN GREY

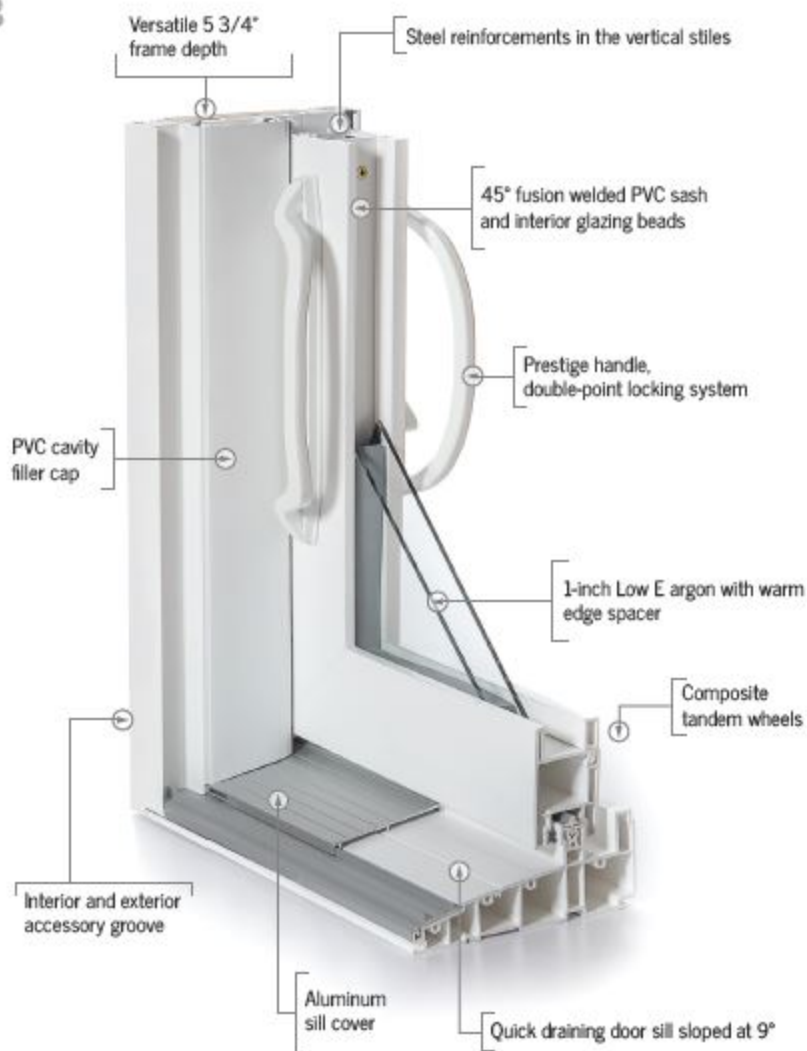
## PERFORMANCES

| Harmonized Standards - 96" x 80" | Air-tightness | Water-tightness | Structure | Overall |
|----------------------------------|---------------|-----------------|-----------|---------|
| AAMA/WDMA/CSA101/LS2/A440-08     | PASSED        | 360 Pa          | DP-50     | PG-R50  |

### Energy efficiency

Double Glazed, Low-E 366 face #2 U 0.31 / SHGC 0.18  
Double Glazed, Low-E 272 face #2 U 0.31 / SHGC 0.27  
Triple Glazed, Low-E 366 face #2 U 0.26 / SHGC 0.17  
Triple Glazed, Low-E 366 face #5 U 0.26 / SHGC 0.25

Testing performed in a laboratory



X= OPERATING PANEL  
O= FIXED PANEL

## CHOICE OF OPENINGS AND SIZES \* Exterior view

| 5'   | 6'   | 8'   |
|--|--|--|
| <div> <div>O</div> <div>X</div> <div>X</div> <div>O</div> </div> | <div> <div>O</div> <div>X</div> <div>X</div> <div>O</div> </div> | <div> <div>O</div> <div>X</div> <div>X</div> <div>O</div> </div> |
| 59 1/2" x 79 1/2"  | 71 1/2" x 79 1/2" or 95 1/2"                                     | 95 1/2" x 79 1/2" or 95 1/2"                                     |



ALL PVC, KNOCKED-DOWN  
PVC FRAME | WELDED PVC PANELS

650

9



## PERFORMANCES

| Harmonized Standards - 71" x 80"                    | Air-tightness | Water-tightness | Structure | Overall |
|---|---------------|-----------------|-----------|---------|
| AAMA/WDMA/CSA101/IS2/A440-08                        | A3 (Passed)   | 440 Pa          | DP-60     | PG-60   |
| Energy efficiency                                   |               |                 |           |         |
| Double Glazed, Low-E 366 face #2 U 0.28 / SHGC 0.21 |               |                 |           |         |

# OPTIONS

OFFERED DEPENDING ON THEIR  
AVAILABILITY FOR EACH MODEL

GLASS

10

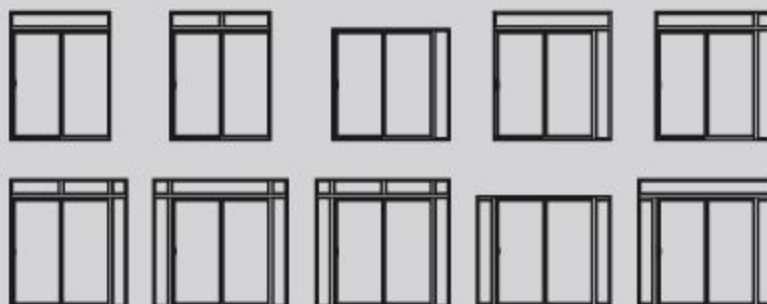
Integrated aluminum mini-blinds with Low E glass



White or Satin grey  
Available only in 79 1/2" height



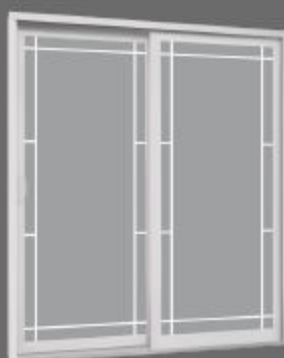
## TRANSOMS AND SIDELITES



## GRIDS



Hanging grids  
3 x 1



Perimeter / Prairie grids  
3 x 5



Regular grids  
3 x 5 or 3 x 6



Rectangular / Flat 5/8" or 1"



Georgian / Contoured 5/8" or 1"

## OPTIONS CHART

|   | 301 | 370 | 650 |
|---|-----|-----|-----|
| Transoms  | •   | •   | —   |
| Sidelites                                       | •   | •   | —   |
| Paint   | •   | •   | —   |
| Low E glass                                     | STD | STD | STD |
| Triple glass                                    | •   | •   | —   |
| Tinted grey or bronze glass                     | •   | •   | •   |
| Integrated blinds with Low E glass - White      | •   | •   | •   |
| Integrated blinds with Low E glass - Satin Grey | •   | •   | —   |
| Grids   | •   | •   | —   |
| Brick mould and sill extension                  | •   | •   | •   |
| Nail fin  | •   | •   | •   |
| Security bar                                    | •   | •   | •   |
| Head lock                                       | —   | •   | —   |
| Foot lock                                       | •   | •   | •   |
| Double-point mortise lock                       | •   | STD | STD |
| Signature handle                                | •   | •   | •   |
| Keyed lock                                      | •   | •   | •   |
| Ultra-resistant screen                          | •   | •   | —   |

## COLORS



11

## HANDLES

### STANDARD PRESTIGE

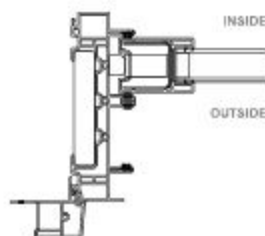
### OPTION



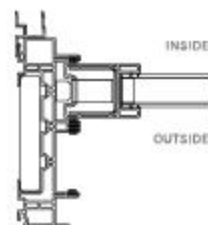
OPTION:  
Double-point  
mortise



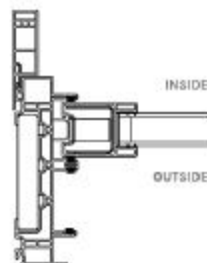
Brass, antique brass, oil rubbed bronze, brushed chrome and brushed antique pewter



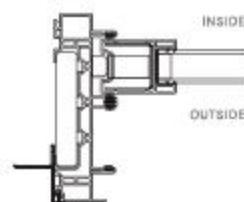
1 1/2" PVC Brick mould



1/2" and 3/4" Drywall return



13/16", 2" or 2 1/2" Jamb extension



Nail fin

Please contact your retailer for the availability of these options. Custom configuration possibilities.





**Primax Compozit Home Systems**  
**5611 Fern Valley Road**  
**Louisville, KY 40228**  
**CHSwindows.com**  
**800-669-2020**