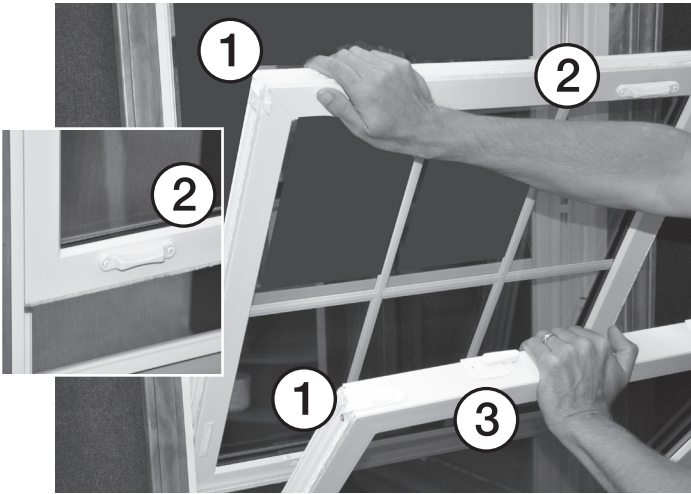


DOUBLE HUNG CLEANING and SASH REMOVAL



Labeled are vital parts of your THV Compozit Double Hung Window. Becoming familiar with them will help you better follow these instructions.

1. Tilt Latch/Top and Bottom Sash
2. Handles/Top and Bottom Sash
3. Double Locks/Bottom Sash

Cleaning

The Compozit of your THV Window will require routine cleaning. Use a mild detergent for light soil.

Screen Removal

Each THV Window features a non-corroding fiber glass cloth screen that slips in and out easily. (Note: See your dealer for full panel and/or half panel screen removal instructions).

Double Hung Routine Maintenance

Periodically clean any debris buildup on sill. Inspect the outside of the window for any maintenance needed. If the above maintenance is not performed, water leakage may occur. In addition, failure to perform this maintenance could void your warranty.

Cleaning Position

Unlock double security locks (3) and raise bottom sash about six inches. Only use the handles (2) to raise and lower sash. Release tilt latches (1) with fingertips and pull top of sash inward. Swing sash down until it rests in the cleaning position approximately 120°. (Caution: Do not clean at 90° that is a safety release feature.)

To clean top sash, leave bottom sash tilted and let rest on frame. Then lower top sash about six inches and release tilt latches (1) and pull top of sash inward. Lay top sash gently against bottom sash and then clean.

Return to normal operating position by simply swinging sash up and pushing until top sash locks into position. Then do the same with the bottom sash. Keep fingers clear at all times.

Sash Removal

Both top and bottom sashes are removed using a similar procedure. Place sash in tilt position at 90° to the frame. Grasp side rails (4) and lift straight up. After sash releases on each side, twist and remove from frame. Replace by reversing removal procedure.

**DO NOT REMOVE SASH FOR CLEANING.
REMOVAL IS ONLY REQUIRED FOR GLASS
REPLACEMENT OR EMERGENCY ESCAPE.**

